



Innovation
that excites

NISSAN QASHQAI



Print | Close

[Exterior design](#) | [Interior design](#) | [Technology & Performance](#) | [Interior space](#) | [Nissan Intelligent Mobility](#) | [Style & Accessories](#) | [Technical Specifications](#) | [Price List](#) | [Commitments](#)





INTELLIGENCE is beautiful, and the smart, sophisticated redesign of the ultimate urban crossover proves it. The New Nissan QASHQAI combines stunning looks with efficient aerodynamics to help you enjoy enlightened city driving **AT ITS BEST.**

[Print](#) | [Close](#)

[Exterior design](#) | [Interior design](#) | [Technology & Performance](#) | [Interior space](#) | [Nissan Intelligent Mobility](#) | [Style & Accessories](#) | [Technical Specifications](#) | [Price List](#) | [Commitments](#)

[Page 1](#) | [Page 2](#) | [Page 3](#) | [Page 4](#)



NISSAN  INTELLIGENT MOBILITY

**THINK IN SYNC.
MOVE INTO A NEW ERA.**

Nissan Intelligent Mobility is redefining the way we power, drive and integrate our cars into our lives. For the New QASHQAI, it is about a suite of intelligent technologies that increase safety and make you more confident behind the wheel. From Intelligent Park Assist to Intelligent Emergency Braking, New Nissan QASHQAI is looking out for you and those around you.



[Print](#) | [Close](#)

[Exterior design](#) | [Interior design](#) | [Technology & Performance](#) | [Interior space](#) | [Nissan Intelligent Mobility](#) | [Style & Accessories](#) | [Technical Specifications](#) | [Price List](#) | [Commitments](#)

[Page 1](#) | [Page 2](#) | [Page 3](#) | [Page 4](#)



UPSCALE DOWN TO THE LAST DETAIL.

Sleek LED headlights with Adaptive Front Lighting System

Redesigned aerodynamic alloy wheels

Distinctive LED rear lights with strong signature and 3D design

Nissan V-Motion grille with 3D printed badge.

Shark fin antenna with NissanConnect EVO navigation and entertainment system

New Tekna+ grades with even more premium design features

SLEEKER LOOKS, SMARTER DESIGN.

It's never looked or felt better. Featuring a stunning range of styling updates including a sleek new headlight design, aerodynamic alloy wheels and a sharply contoured front grille and bonnet design, the New QASHQAI is more sophisticated and dynamic than ever.



Print | Close

[Exterior design](#) | [Interior design](#) | [Technology & Performance](#) | [Interior space](#) | [Nissan Intelligent Mobility](#) | [Style & Accessories](#) | [Technical Specifications](#) | [Price List](#) | [Commitments](#)

[Page 1](#) | [Page 2](#) | [Page 3](#) | [Page 4](#)





[Print](#) | [Close](#)

[Exterior design](#) | [Interior design](#) | [Technology & Performance](#) | [Interior space](#) | [Nissan Intelligent Mobility](#) | [Style & Accessories](#) | [Technical Specifications](#) | [Price List](#) | [Commitments](#)

[Page 1](#) | [Page 2](#) | [Page 3](#) | [Page 4](#)





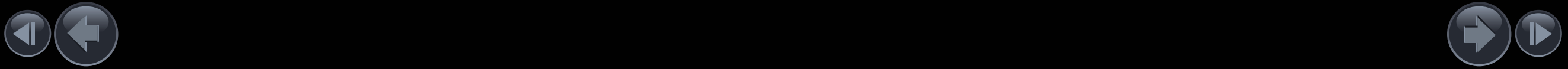
FINE-TUNED TO PERFECTION.

Take control with confidence behind the premium, sports steering wheel, while QASHQAI's panoramic glass roof with one-touch electric shade lets the light pour in.

PREMIUM QUALITY AND COMFORT.

- | | | | |
|--------------------------------|--|---|---|
| Sports D-shaped steering wheel | Panoramic glass roof with one-touch electric shade | Premium Nappa leather trim with 3D quilting | 4-way Power lumbar support with driver seat memory function |
|--------------------------------|--|---|---|

[Print](#) | [Close](#)



NISSAN ADVANCED DRIVE-ASSIST DISPLAY
MORE ACTION LESS DISTRACTION.

The New QASHQAI's Advanced Drive-Assist Display puts all your info right in front of you - just toggle between the screens using the steering wheel controls. Easy.

7:3223°C

Audio Muted
schräge Steffen
Push or

CALLER ID

7:3223°C

Driving Aids

NISSAN SAFETY SHIELD

7:3223°C

Bluetooth Audio
Hold On
Alabama Shakes
ENTER = Change Source

AUDIO

7:3223°C

COLOUR SELECTION

7:3223°C

3.2 km

TURN-BY-TURN NAVIGATION

7:3223°C

Steering Effort
NORMAL
SPORT

STEERING MODE

7:3223°C

Tire Pressure
kPa
180 250 240
240 250 70

TYRE PRESSURE MONITORING SYSTEM

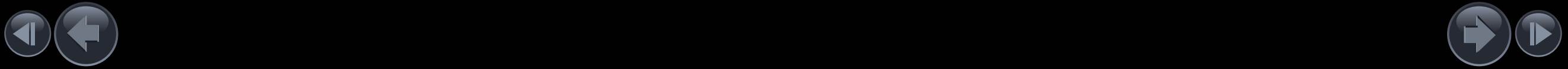
7:3223°C

Sonar

PUSH ENTER TO EXIT

PARKING SENSORS DISPLAY

*Some features not available on all grades



New Nissan QASHQAI features a premium Bose speaker audio system, creating an expansive listening experience throughout the cabin. With eight high performance, custom engineered speakers including a boot mounted subwoofer, New QASHQAI offers a bespoke premium audio package.



Wherever the road takes you, the new custom Bose sound system provides the right soundtrack for the ride.



NISSAN INTELLIGENT MOBILITY

NissanConnect

CONNECT YOUR WORLDS.

With NissanConnect EVO, New QASHQAI becomes your smartphone's best friend. Featuring new, more intuitive graphics, you can access your music, driving eco score, Facebook newsfeed and TripAdvisor tips. The basic app package is free for the first three years and the NissanConnect EVO system will also keep you in the loop with Bluetooth hands-free calling, audio streaming, digital radio (DAB+) and an iPod/USB input.



Print | Close

[Exterior design](#) | [Interior design](#) | [Technology & Performance](#) | [Interior space](#) | [Nissan Intelligent Mobility](#) | [Style & Accessories](#) | [Technical Specifications](#) | [Price List](#) | [Commitments](#)

[Page 1](#) | [Page 2](#)





*Nappa leather is only available on Tekna+ grade.
Some parts of leather seats contain artificial leather

RESERVE THOSE SEATS.

They're the best in the house: with their new monoform design and finished in high quality Nappa leather with soft 3D quilting, the seats in the New Nissan QASHQAI envelope you in lasting, luxurious comfort.

[Print](#) | [Close](#)

[Exterior design](#) | [Interior design](#) | [Technology & Performance](#) | [Interior space](#) | [Nissan Intelligent Mobility](#) | [Style & Accessories](#) | [Technical Specifications](#) | [Price List](#) | [Commitments](#)

[Page 1](#) | [Page 2](#)



ROOM WITH A VIEW.

Keep an open mind - There's always space for more. Fold down a rear seat or make a flat floor for bulky gear, and use those smart storage spaces to avoid clutter.

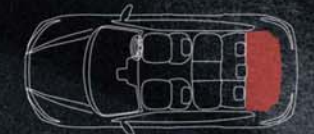
*Luggage board system available from Acenta grade



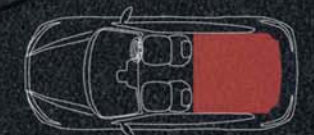
Nissan's divide-and-hide cargo system with adjustable shelves and dividers offers a variety of configurations. A bucket-type glove box and phone-holder with USB/12V power sockets and a twin cup holder come in very handy.

*401 litres of boot space on Tekna and Tekna+ grades 1,569 litres of boot space with folded seats on Tekna and Tekna+ grades.

430L BOOT SPACE



1,598L WITH FOLDED SEATS



[Print](#) | [Close](#)

[Exterior design](#) | [Interior design](#) | [Technology & Performance](#) | [Interior space](#) | [Nissan Intelligent Mobility](#) | [Style & Accessories](#) | [Technical Specifications](#) | [Price List](#) | [Commitments](#)

[Page 1](#) | [Page 2](#)



SEE MORE AROUND YOU A WHOLE NEW PERSPECTIVE.

Parking and manoeuvring is a breeze when you've got an extra pair of eyes. The Nissan Intelligent Around-View Monitor uses four cameras to give you a virtual bird's-eye view of your QASHQAI with selectable split-scene close-ups of the front, rear and kerbside to give you an even better look. You'll be sure to fit into your chosen spot and every move you make will be simpler and more precise.

RIGHT ON THE NOSE.

In Drive, the display gives you both a front and overhead view, so you know just how far to pull up – without going too far.

COMPLETE THE PICTURE.

Located under the door mirrors, these cameras complete your virtual 360° bird's-eye view for every manoeuvre

SPARE YOUR WHEELS.

In Drive or Reverse, you can push the camera button to switch between the overhead view for a close-up side view. A great help for checking your distance from the kerb.

BACKGROUND SAVVY.

In Reverse, the display helps you see what's directly behind you, while the overhead view helps with smaller objects that might be hidden below your line of sight.

GET A HAND WHEN YOU WANT IT
RELAX, YOU'RE NOT ALONE.

Nissan Intelligent Mobility is taking your driving experience to the next level. It's bringing you and your QASHQAI closer through Intelligent Driving technologies that make you feel more confident and in control. It's turning driving into a more exhilarating experience and making the road a better place to be everyday.

INTELLIGENT PARK ASSIST WITH NEW REAR CROSS-TRAFFIC ALERT
Let New QASHQAI take over steering duties in tight parking spots – and let Rear Cross-Traffic Alert warn you of approaching traffic when you are reversing.

*Available from Tekna grade

PARALLEL PARKING



BAY PARKING



REAR CROSS TRAFFIC ALERT



MOVING OBJECT DETECTION



[Print](#) | [Close](#)

[Exterior design](#) | [Interior design](#) | [Technology & Performance](#) | [Interior space](#) | [Nissan Intelligent Mobility](#) | [Style & Accessories](#) | [Technical Specifications](#) | [Price List](#) | [Commitments](#)

[Page 1](#) | [Page 2](#) | [Page 3](#) | [Page 4](#) | [Page 5](#) | [Page 6](#)



GET A HAND WHEN YOU WANT IT
STEPS IN WHEN YOU NEED IT.

Nissan's Intelligent Driving technologies are always on the alert and ready to step in to keep you out of trouble.



LANE DEPARTURE WARNING. Always alert. This system will react with an audible warning if you start drifting out of lane without indicating.

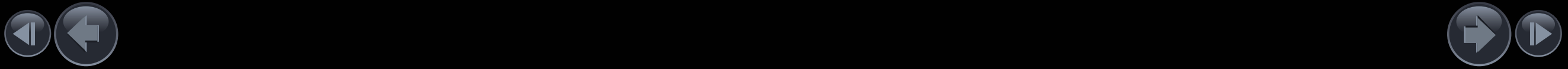


INTELLIGENT EMERGENCY BRAKING. New QASHQAI looks out for you - and those around you. If there are any objects in your way, this system will warn you. It will even help you to reduce speed if necessary.



INTELLIGENT AUTO HEADLIGHTS WITH NEW ADAPTIVE FRONT LIGHTING SYSTEM. New QASHQAI's sleek headlights intelligently light your way by automatically turning on when it gets dark or when you enter a tunnel or underground car park. The Adaptive Front Lighting System controls the LED headlight beam to improve your visibility whilst cornering. On a winding road, the system will dynamically change the lighting pattern to illuminate the apex of each curve, depending on your speed and steering input.

*Optional from N-Connecta grade. Standard from Tekna grade





TRAFFIC SIGN RECOGNITION. This system keeps you up to date with the latest speed limit by detecting road signs as you go.



BLIND SPOT WARNING. Boost your vision: the system will warn you if there are vehicles in the blind spots diagonally behind the car.

SEE MORE AROUND YOU

IT SENSES MOVEMENT AND WARNS YOU.

Nissan's Intelligent Driving technologies use advanced radar technology to constantly monitor activity going on around you, keeping tabs on the traffic and helping you handle any unexpected situations.

Print | Close

[Exterior design](#) | [Interior design](#) | [Technology & Performance](#) | [Interior space](#) | [Nissan Intelligent Mobility](#) | [Style & Accessories](#) | [Technical Specifications](#) | [Price List](#) | [Commitments](#)

[Page 1](#) | [Page 2](#) | [Page 3](#) | [Page 4](#) | [Page 5](#) | [Page 6](#)



DRIVE MORE LIKE A PRO GAIN CONFIDENCE, OWN THE ROAD.

So agile and responsive, so smooth to handle, so supple and yet secure: the New QASHQAI is an engaging drive thanks to Nissan's innovative Chassis Control technology.



INTELLIGENT ENGINE BRAKE. This technology adds engine braking to the Xtronic automatic transmission, applying greater control when cornering or braking. By minimising the frequency and effort normally required to brake the vehicle, the system increases driver comfort and safety.



INTELLIGENT 4x4. Off road or on road, the New QASHQAI's 4x4 technology maximises tyre traction. Using advanced sensors, the Intelligent 4x4 system monitors the traction at the wheels and by measuring wheel slip, instantly redistributes torque by up to 50% to the rear wheels.



INTELLIGENT RIDE CONTROL. Take the rough with the smooth. This system applies subtle braking to prevent disturbance when encountering bumps and ensures a comfortably smooth ride.

Print | Close

[Exterior design](#) | [Interior design](#) | [Technology & Performance](#) | [Interior space](#) | [Nissan Intelligent Mobility](#) | [Style & Accessories](#) | [Technical Specifications](#) | [Price List](#) | [Commitments](#)

[Page 1](#) | [Page 2](#) | [Page 3](#) | [Page 4](#) | [Page 5](#) | [Page 6](#)

DRIVE MORE LIKE A PRO
MAXIMISE YOUR PERFORMANCE.

Choose the turbocharged efficiency of a petrol engine or the high performance of a larger diesel powertrain, downsized for enhanced fuel economy and lower CO₂ emissions.

NISSAN INTELLIGENT MOBILITY

DIESEL & PETROL DRIVETRAINS. With a range of highly efficient engines, there is a New Nissan QASHQAI to suit everyone. From the ultra efficient dCi 110 engine with CO₂ of 99g/km, to the DIG-T 115 or dCi 130 engines offering optimal fuel savings and smooth acceleration when paired with the Xtronic automatic gearbox. The DIG-T 163 petrol engine delivers high performance and maximum economy through a slick 6-speed manual transmission.

DIESEL	OUTPUT (PS)	AXLE	TRANSMISSION	FUEL CONSUMPTION (L/100 KM/MPG)			CO ₂ g/KM
				URBAN	EXTRA URBAN	COMBINED	
1.5 dCi	110	2WD	Manual	4.2 / 67.3	3.6 / 78.5	3.8 / 74.3	99
1.6 dCi	130	2WD	Manual	5.1 / 55.4	4.1 / 68.9	4.4 / 64.2	116
1.6 dCi	130	2WD	Xtronic	5.3 / 53.3	4.4 / 64.2	4.7 / 60.1	122
1.6 dCi	130	4WD	Manual	5.7 / 49.6	4.5 / 62.8	4.9 / 57.6	129

PETROL	OUTPUT (PS)	AXLE	TRANSMISSION	FUEL CONSUMPTION (L/100 KM/MPG)			CO ₂ g/KM
				URBAN CYCLE	EXTRA-URBAN	COMBINED	
1.2 DIG-T	115	2WD	Manual	6.6 / 42.8	5.1 / 55.4	5.6 / 50.4	129
1.2 DIG-T	115	2WD	Xtronic	6.5 / 43.5	5.2 / 54.3	5.6 / 50.4	129
1.6 DIG-T	163	2WD	Manual	7.4 / 38.2	4.8 / 58.9	5.8 / 48.7	134

*Tentative Data

Print | Close



ELEGANCE PACK REFINE YOUR RIDE.

Pack your New QASHQAI with elegance and refinement. Start your accessory personalisation with a set of stylish black or chrome bumper finishers to enhance the front and rear design. Put your signature on your own QASHQAI with bi-coloured alloy wheels, illuminated entry guards and premium welcome lighting.

CROSSOVER PACK ASSERT YOUR STYLE.

There's no style without substance. Give your QASHQAI an edge with a pack of front and rear styling plates combined with 19" alloy wheels, and get kitted out with handy accessories like a sturdy kid's table.



[Print](#) | [Close](#)

[Exterior design](#) | [Interior design](#) | [Technology & Performance](#) | [Interior space](#) | [Nissan Intelligent Mobility](#) | [Style & Accessories](#) | [Technical Specifications](#) | [Price List](#) | [Commitments](#)

[Page 1](#) | [Page 2](#)



COLOURS



VIVID BLUE - PREMIUM METALLIC - RCA



CHESTNUT BRONZE - PREMIUM METALLIC - CAN



STORM WHITE - PEARLESCENT - QAB



BLADE SILVER - METALLIC - KYO



GUN METALLIC - METALLIC - KAD



NIGHTSHADE - METALLIC - GAB



PEARL BLACK - METALLIC - Z11



INK BLUE - METALLIC - RBN



MAGNETIC RED - METALLIC - NAJ



FLAME RED - SOLID - Z10

*Magnetic Red & Flame Red not available with Plum Nappa Leather Trim

WHEELS



16" STEEL WHEEL



17" AERO ALLOY WHEEL



18" TWO TONE ALLOY WHEEL



19" DIAMOND CUT ALLOY WHEEL

DIMENSIONS

A: Wheelbase: 2,646mm
B: Overall length: 4,394mm
C: Overall width: 1,806mm
D: Overall height: 1,595mm



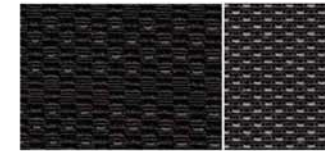
TRIMS

VISIA



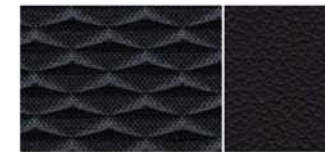
CHARCOAL CLOTH

N-CONNECTA



ANTHRACITE CLOTH, MONOFORM STYLE SEATS

TEKNA



GRAPHITE PART LEATHER / PART CLOTH, MONOFORM STYLE SEATS

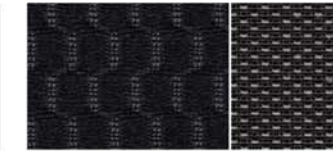
TEKNA +



BLACK PREMIUM NAPPA LEATHER, MONOFORM STYLE SEATS

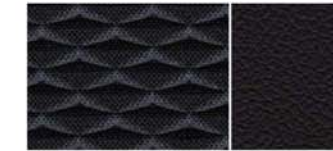
*Some parts of leather seats contain artificial leather

ACENTA



GRAPHITE CLOTH

'N-CONNECTA OPTION'



GRAPHITE PART LEATHER / PART CLOTH, MONOFORM STYLE SEATS

TEKNA+ OPTION:



PLUM PREMIUM NAPPA LEATHER, MONOFORM STYLE SEATS



Print | Close

AT NISSAN,
**WE FOCUS
ON QUALITY.**



MASTERED THROUGH EXPERIENCE.

At Nissan, we do everything with the customer in mind. Every action and decision we make, is made with the utmost care, precision and quality because ultimately, it's for you. From conception to car construction, from testing to transparency, from customer service to commitment. Quality is in every fine detail.



360° PROCESS

We build in quality from the outset, meticulously conceiving each car to make them more comfortable and more durable through innovative design, intelligent technology and thoughtful details inspired by you.



SAFETY

We work with our intelligent driving systems to constantly look out for you and help you avoid any mishaps for a bolder, more confident driving experience day after day. Our Around View Monitor uses 4 cameras to give you a virtual birds eye view of your car in its surroundings.



EXTREME RELIABILITY

We push our cars to the limit to guarantee their daily performance and reliability. We travel millions of kilometres in pre-production tests, open and close doors and bonnets thousands of times a day and even use real volcanic dust from Japan to test window resistance.



ULTIMATE PROOF | reevoo

Our commitment to quality is best demonstrated by you. Search for testimonials, reviews and ratings online or find out what people are saying about Nissan on Reevoo. It's the best place to compare vehicles and get real answers from real owners you can trust.

<https://www.nissan.co.uk/vehicles/new-vehicles/qashqai/customer-reviews.html>

Print | Close

Exterior design | Interior design | Technology & Performance | Interior space | Nissan Intelligent Mobility | Style & Accessories | Technical Specifications | Price List | Commitments



OUR PROMISE. YOUR EXPERIENCE

THERE'S NO TIME LIMIT ON HOW LONG YOU WILL BENEFIT FROM OUR PROMISES. IF YOU HAVE JOINED THE YOU+NISSAN PROGRAM, AND WANT TO BE SPOKEN TO IN A GENUINE, OPEN AND HONEST MANNER, WE WILL LOOK AFTER YOU. FOREVER. **THAT IS OUR PROMISE.**

FREE COURTESY CAR

We promise to keep you on the road whilst your car is being serviced. Book in advance and we'll ensure that a free courtesy car is available for you. We even have electric cars available at select service points, and a range of other transport solutions to suit your needs.



FREE VEHICLE HEALTH CHECK

We promise to give your car a free health check prior to any work being carried out, so you know exactly what needs to be done, and how much it will cost. All our prices are also fully accessible online and at our dealers.



SERVICE PRICE MATCH

We promise to deliver the highest care for your Nissan thanks to the expertise of Nissan trained teams and the use of Nissan genuine parts. We simply know best how to service your Nissan. And to guarantee best value-for-money, Nissan will price match like-for-like quotes within 10km of your local dealer.



LIFETIME NISSAN ASSISTANCE

We promise to keep you on the road 24/7. Should anything unexpected happen, we guarantee 24-hour Nissan assistance, whatever the age of your Nissan.



ANYWHERE, ANYTIME, ANYTHING. JUST CALL 0800 000 000 AND WE'LL BE RIGHT THERE.

SERVICE CONTRACTS

Nissan Service Contract is the best way to give your Nissan QASHQAI the maintenance it deserves! We take good care of your Nissan whilst keeping your aftercare at fix price over years. While bringing your car at our dealership, we will change your parts and fluids in accordance with Nissan official service schedule and perform check ups for peace of mind journeys. Total budget and plan control, Nissan will inform you of due visits and propose the most suitable service and timing for your services.

EXTENDED WARRANTY

Nissan Extended Warranty gives you the opportunity to extend the 3 Years/100,000 km warranty for a longer period or mileage. Select the contract that best suits your driving usage. In case of a repair, only Nissan genuine parts will be used and fitted by Nissan trained technicians. For your peace of mind, 24/7 European roadside assistance is included (if applicable).

AT NISSAN, YOU BRING OUT THE BEST IN US.

You spark our imagination. You provoke our ingenuity. You inspire us to change the rules and innovate. And at Nissan, innovation is not just about additions and extensions; it's about crossing the line to reinvent the status quo. It's about developing unexpected solutions to satisfy your wildest and most pragmatic desires. At Nissan, we design cars, accessories and services that break the mould - making the practical exciting and the exciting practical to offer you a more exhilarating driving experience everyday.



NISSAN QASHQAI OFFERS YOU:

3-YEAR WARRANTY OR 60,000 MILES

YEARLY OR 18,000 MILES INTERVAL FOR DIESEL ENGINES

YEARLY OR 12,500 MILES INTERVAL FOR PETROL ENGINES

Print | Close

Exterior design | Interior design | Technology & Performance | Interior space | Nissan Intelligent Mobility | Style & Accessories | Technical Specifications | Price List | Commitments

NISSAN INTELLIGENT MOBILITY

Intelligent Mobility guides everything we do. At Nissan, we use new technologies to transform cars from mere transportation. Together the journey is more confident, connected, and exciting. Whether it is cars that share the task of driving or highways that charge your EV as you go along, it's all in the very near future. And it's a future already taking shape in the Nissan you drive today.

visit our website at: www.nissan.co.uk

Follow Nissan QASHQAI on:



Every effort has been made to ensure that the content of this publication is correct at the time of going to press (June 2017). This brochure has been produced featuring prototype vehicles exhibited at motor shows. In accordance with the company's policy of continuously improving its products, Nissan Europe reserves the right to change at any time the specification and the vehicles described and shown in this publication. Nissan dealers will be informed of any such modifications as quickly as possible. Please check with your local Nissan dealer to receive the most up-to-date information. Because of the limitations of the printing processes used, the colours shown in this brochure may differ slightly from the actual colours of the paint and interior trim materials used. All rights reserved. Reproduction in whole or part of this brochure without the written permission of Nissan Europe is forbidden.

This brochure is made from chlorine free paper - MY17 QASHQAI brochure 05/2017 - Printed in EU.
Created by DESIGNORY, France and produced by eg+ worldwide, France - Tel: +33 1 49 09 25 35. Part number: 99999 54318

Dealer stamp:

Print | Close

Exterior design | Interior design | Technology & Performance | Interior space | Nissan Intelligent Mobility | Style & Accessories | Technical Specifications | Price List | Commitments



NISSAN QASHQAI



[Print](#) | [Close](#)

[Exterior design](#) | [Interior design](#) | [Technology & Performance](#) | [Interior space](#) | [Nissan Intelligent Mobility](#) | [Style & Accessories](#) | [Technical Specifications](#) | [Price List](#) | [Commitments](#)

[Page 1](#) | [Page 2](#) | [Page 3](#) | [Page 4](#) | [Page 5](#) | [Page 6](#) | [Page 7](#) | [Page 8](#)



STANDARD EQUIPMENT

INTELLIGENCE is beautiful, and the smart, sophisticated redesign of the ultimate urban crossover proves it. The New Nissan QASHQAI combines stunning looks with efficient aerodynamics to help you enjoy enlightened city driving AT ITS BEST.

ALL NISSAN QASHQAIS COME WITH:

SECURITY

- Remote central door locking with superlocking
- Engine immobiliser
- Thatcham alarm system

SAFETY

- ABS with EBD and Brake Assist
- Electronic Stability Programme (ESP)
- Driver, passenger, side and curtain airbags
- Stand Still Assist with Auto Hold Function (Manual transmission only)
- Electric Parking Brake
- Chassis Control: Intelligent Trace Control and Intelligent Ride Control
- Height adjustable front headrests
- Front seat belts with load limiter and pretensioner
- Front seatbelt height adjustment
- 3 rear headrests
- 3 x 3-Point rear seatbelts with ELR
- ISOFIX childseat anchorage points (rear)
- Rear door childlocks
- Puncture repair kit
- Tyre Pressure Monitoring System

AUDIO AND NAVIGATION

- AM/FM/CD audio system with DAB
- Remote audio control
- Bluetooth® with audio streaming
- 5" High Definition full colour TFT screen combimeter
- USB port
- AUX socket for MP3 players

EXTERIOR STYLING

- Chrome glass surround
- Body coloured bumpers, handles and mirrors
- V-Motion front grille
- Underbody Vortex Generators
- Rear roof spoiler

INTERIOR STYLING

- 5" High Definition full colour TFT screen combimeter

VENTILATION AND VISIBILITY

- LED Daytime Running Lights
- LED Signature Rear Lights

CONVENIENCE

- One Touch front and rear electric windows with remote opening/closing
- Tilt and telescopic steering wheel
- Electric speed-sensitive power steering
- Selectable steering (Normal or Sport)
- Front centre console and armrest
- Height adjustable driver's seat
- Trip computer
- Cruise control and speed limiter
- Idle Stop/Start System
- Electrically adjustable door mirrors
- Heated door mirrors
- 60:40 Split folding rear seat

OPTIONS*

- Metallic Paint
- Premium Metallic Paint
- Pearlescent Paint

VISIA

IN ADDITION TO STANDARD EQUIPMENT

AUDIO

- 4 speakers

EXTERIOR STYLING

- 16" Steel wheels
- Matte black rear diffuser

INTERIOR STYLING

- Charcoal cloth trim
- Gun metal effect dashboard trim
- D-shaped steering wheel

VENTILATION AND VISIBILITY

- Manual air conditioning with pollen filter

OPTIONS*

- Spare Wheel Pack
- Smart Vision Pack:
 - Traffic Sign Recognition
 - Intelligent Rear View Mirror
 - Intelligent Emergency Braking
 - Lane Departure Warning
 - Front and Rear Parking Sensors



*Options available at additional cost

Print | Close

ACENTA

IN ADDITION TO VISIA

SAFETY

- Chassis Control Xtronic: Intelligent Engine Brake (Xtronic only), Intelligent Trace Control and Intelligent Ride Control)

AUDIO

- 6 speakers

EXTERIOR STYLING

- 17" Aero Alloy wheels

INTERIOR STYLING

- Graphite cloth trim
- Piano black dashboard trim
- Chrome interior door handles
- D-Shaped Leather steering wheel
- Leather gear lever
- Interior ambient lighting

CONVENIENCE

- Height adjustable passenger's seat
- Rear seat armrest with 2 cupholders
- Luggage board system (16 combinations)
- Auto-folding mirrors
- Driver seat with manual lumbar support
- Auto-wipers
- Intelligent Auto Headlights

VENTILATION AND VISIBILITY

- Automatic dual zone climate control with pollen filter
- Front fog lights

OPTIONS*

- 18" Two Tone Alloy wheels
- Spare Wheel Pack
- Smart Vision Pack:
 - High Beam Assist
 - Traffic Sign Recognition
 - Intelligent Rear View Mirror
 - Intelligent Emergency Braking
 - Lane Departure Warning
 - Front and Rear Parking Sensors
- Comfort Pack:
 - Panoramic Glass roof
 - Electric One Touch shade
 - Matte Silver Roof Rails
- Heat Pack:
 - Front heated seats
 - ThermaClear heated windscreen
- Tech Pack:
 - NissanConnect EVO 7" Touchscreen Navigation and Entertainment System
 - Rear privacy glass
 - Sharkfin antenna
 - Rear View Camera



*Options available at additional cost

N-CONNECTA

IN ADDITION TO ACENTA

SECURITY AND SAFETY

- Smart Vision Pack:
 - High Beam Assist
 - Traffic Sign Recognition
 - Intelligent Rear View Mirror
 - Intelligent Emergency Braking
 - Lane Departure Warning
 - Front and Rear Parking Sensors

EXTERIOR STYLING

- 18" Two Tone Alloy wheels
- Silver rear styling plate
- Matte Silver Roof Rails

INTERIOR STYLING

- Anthracite cloth trim
- Monoform sports seats
- Carbon effect dashboard trim

AUDIO AND NAVIGATION

- NissanConnect EVO 7" Touchscreen Navigation and Entertainment System
- Rear privacy glass
- Sharkfin antenna

CONVENIENCE

- Intelligent Around View Monitor (360° colour camera)
- Start push button
- Colour front, rear and side view cameras
- Nissan i-Key

OPTIONS*

- Space saver spare wheel
- Heat Pack:
 - Front heated seats
 - ThermaClear heated windscreen
- Glass Roof Pack:
 - Panoramic Glass roof
 - Electric One Touch shade
- Executive Pack:
 - Front heated seats
 - ThermaClear heated windscreen
 - Part leather Monoform sports seats**
 - Electrically adjustable driver seat
- LED Pack:
 - LED headlights with Adaptive Front Lighting System
 - LED Signature Daytime Running Lights with Directional indicator
 - Auto Headlight Levelling System



*Options available at additional cost
**Some parts of leather seats contain artificial leather

Print | Close

Exterior design | Interior design | Technology & Performance | Interior space | Nissan Intelligent Mobility | Style & Accessories | [Technical Specifications](#) | Price List | Commitments

Page 1 | Page 2 | [Page 3](#) | Page 4 | Page 5 | Page 6 | Page 7 | Page 8

TEKNA

IN ADDITION TO N-CONNECTA

SAFETY AND SECURITY

- Safety Shield Plus:
 - Intelligent Driver Alert
 - Blind Spot Warning
 - Rear Cross Traffic Alert
 - Moving Object Detection
- Intelligent Park Assist

INTERIOR STYLING

- Graphite part leather / part cloth trim**
- Monoform sports seats
- Electrically adjustable driver seat

EXTERIOR

- 19" Diamond Cut Alloy wheels

VENTILATION AND VISIBILITY

- LED headlights with Adaptive Front Lighting System
- LED Signature Daytime Running Lights with Directional indicator
- Automatic Headlight Levelling System

CONVENIENCE

- Front heated seats
- ThermoClear heated windscreen

AUDIO AND NAVIGATION

- Premium Bose® Audio System
- 8 Bose® Speakers: 2 Tweeters, 4 high and medium frequency door speakers
- 7.7-litre dual driver subwoofer
- Digital Amplifier

OPTIONS*

- Glass Roof Pack:
 - Panoramic Glass roof
 - Electric One Touch shade
- 18" Two Tone Alloy wheels



*Options available at additional cost

**Some parts of leather seats contain artificial leather

TEKNA+

IN ADDITION TO TEKNA

EXTERIOR STYLING

- Panoramic Glass roof
- Electric One Touch shade
- Gloss Silver roof rails
- Gloss Silver mirror caps

INTERIOR STYLING

- Black Nappa Leather trim with 3D quilting**
- Monoform sports seats
- Electrically adjustable driver seat with memory function
- Electrically adjustable 4-way lumbar support on driver seat
- Electrically adjustable passenger seat with manual lumbar support
- Door mirrors with memory function
- Dark headlining

OPTIONS*

- Plum Nappa Leather trim
- 18" Two Tone Alloy wheels



*Options available at additional cost

**Some parts of leather seats contain artificial leather

[Print](#) | [Close](#)

[Exterior design](#) | [Interior design](#) | [Technology & Performance](#) | [Interior space](#) | [Nissan Intelligent Mobility](#) | [Style & Accessories](#) | [Technical Specifications](#) | [Price List](#) | [Commitments](#)

[Page 1](#) | [Page 2](#) | [Page 3](#) | [Page 4](#) | [Page 5](#) | [Page 6](#) | [Page 7](#) | [Page 8](#)



COLOURS



VIVID BLUE
PREMIUM METALLIC



CHESTNUT BRONZE
PREMIUM METALLIC



STORM WHITE
PEARLESCENT



BLADE SILVER
METALLIC



GUN METALLIC
METALLIC



NIGHTSHADE
METALLIC



PEARL BLACK
METALLIC



INK BLUE
METALLIC



MAGNETIC RED
METALLIC



FLAME RED
SOLID

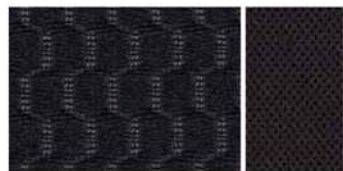
*Magnetic Red & Flame Red not available
with Plum Nappa Leather Trim

[Print](#) | [Close](#)

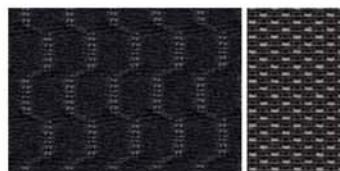
[Exterior design](#) | [Interior design](#) | [Technology & Performance](#) | [Interior space](#) | [Nissan Intelligent Mobility](#) | [Style & Accessories](#) | [Technical Specifications](#) | [Price List](#) | [Commitments](#)

[Page 1](#) | [Page 2](#) | [Page 3](#) | [Page 4](#) | [Page 5](#) | [Page 6](#) | [Page 7](#) | [Page 8](#)

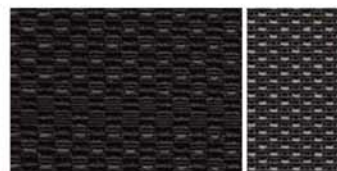
TRIMS



VISIA
CHARCOAL CLOTH



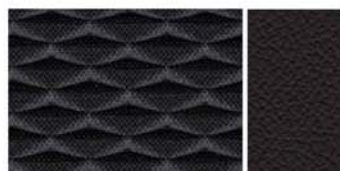
ACENTA
GRAPHITE CLOTH



N-CONNECTA
ANTHRACITE CLOTH,
MONOFORM STYLE SEATS



N-CONNECTA OPTION
GRAPHITE PART LEATHER / PART CLOTH,
MONOFORM STYLE SEATS



TEKNA
GRAPHITE PART LEATHER / PART CLOTH,
MONOFORM STYLE SEATS



TEKNA+
BLACK PREMIUM NAPPA LEATHER,
MONOFORM STYLE SEATS



TEKNA+ OPTION
PLUM PREMIUM NAPPA LEATHER,
MONOFORM STYLE SEATS

WHEELS



16" Steel wheel
VISIA



17" Aero alloy wheel
ACENTA



18" Two Tone alloy wheel
N-CONNECTA, optional on
ACENTA, TEKNA and TEKNA+.



19" Diamond Cut alloy wheel
TEKNA and TEKNA+

Some parts of leather seats contain artificial leather

TECHNICAL SPECIFICATION

		1.2 DIG-T 115 PETROL		1.6 DIG-T 163 PETROL	1.5 dCi 110 DIESEL	1.6 dCi 130 DIESEL		
		6-speed manual	Xtronic auto transmission	6-speed manual	6-speed manual	6-speed manual	Xtronic auto transmission	6-speed manual
MODEL		2WD						4WD
Available grades		ALL	ACENTA, N-CONNECTA, TEKNA, TEKNA+	N-CONNECTA, TEKNA, TEKNA+	ALL	N-CONNECTA, TEKNA, TEKNA+		
Seating capacity	persons	5						

ENGINE						
Engine capacity	cc	1197		1618	1461	1598
No. of cylinders, configuration		4 in line				
Max. engine power ⁽¹⁾	kW(PS)/min-1	85 (115)/4500	85 (115)/5200	120 (163)/5600	81 (110)/4000	96 (130)/4000
Max. torque ⁽¹⁾	Nm/min-1	190/2000	165/1750	240/2000-4000	260/1750-2500	320/1750
Fuel type		Petrol			Diesel	
Fuel tank capacity	Litres	55		65	55 65	

DRIVE TRAIN							
Transmission type		6-speed manual	Xtronic auto transmission	6-speed manual		Xtronic auto transmission	6-speed manual
Driven wheels		2WD					All Mode 4x4- / 2WD
Nissan Stop/Start technology		Yes					

CHASSIS						
Wheel size		16x6.5J, 17x7.0J, 18x7. 0J, 19x7.0J	17x7.0J, 18x7. 0J, 19x7.0J	18x7.0J, 19x7.0J	16x6.5J, 17x7.0J 18x7.0J, 19x7.0J	18x7.0J, 19x7.0J
Tyre size		215/65 R16, 215/60 R17, 215/55 R18, 225/45 R19	215/60 R17, 215/55 R18, 225/45 R19	215/55 R18, 225/45 R19	215/65 R16 215/60 R17 215/55 R18, 225/45 R19	215/55 R18, 225/45 R19

¹⁾ In accordance with 1999/99/EC. Figures are intended for comparisons between vehicles and may not reflect real driving results. Optional equipment, maintenance, driving behaviour, road and weather conditions may affect the official results.
²⁾ Figures in accordance with EC Directive. Kerb weight condition is without driver and including coolant, oils, fuel, spare wheel and tools. Payload will be reduced depending on the options and/or accessories installed.
³⁾ In accordance with 1999/100/EC. Figures are intended for comparisons between vehicles and may not reflect real driving results. (Optional equipment, maintenance, driving behaviour, road and weather conditions may affect the official results)
* The dCi 110 and dCi 130 engines fitted to the Nissan Qashqai include a diesel particulate filter (DPF) to reduce emissions. The functionality of a DPF may not be suitable for all customers. If your journeys are predominantly urban or low speed, a model without a DPF may be a more suitable alternative.

Print | Close

Exterior design | Interior design | Technology & Performance | Interior space | Nissan Intelligent Mobility | Style & Accessories | **Technical Specifications** | Price List | Commitments

Page 1 | Page 2 | Page 3 | Page 4 | Page 5 | **Page 6** | Page 7 | Page 8

TECHNICAL SPECIFICATION

			1.2 DIG-T 115 PETROL		1.6 DIG-T 163 PETROL	1.5 dCi 110 DIESEL	1.6 dCi 130 DIESEL				
			6-speed manual	Xtronic auto transmission	6-speed manual	6-speed manual	6-speed manual	Xtronic auto transmission	6-speed manual		
MODEL			2WD						4WD		
Available grades			ALL	ACENTA, N-CONNECTA, TEKNA, TEKNA+	N-CONNECTA, TEKNA, TEKNA+	ALL	N-CONNECTA, TEKNA, TEKNA+				
Seating capacity	persons		5								
WEIGHTS & DIMENSIONS											
Gross Vehicle Weight		kg	1860	1880	1900	1910	1960	2005	2030		
Kerb weight min/max		kg	1331-1456	1343-1469	1369-1494	1379-1507	1429-1557	1469-1596	1507 - 1596	1527-1614	
Max. pay load ⁽²⁾		kg	529	537	531			495	536	498	503
Max. trailer weight	braked	kg	1200	1000	1500	1350	1800	1400	1800		
	unbraked	kg	675	680	695	692	720	740	750		
Max axle weight	Front	kg	970	985	1015	1020	1075	1110	1110		
	Rear	kg	970	980	960	970			1005		
Max vertical load on coupling point		kg	100								
Overall length		mm	4394								
Overall width	excluding mirrors	mm	1806								
	including mirrors	mm	2070								
Overall height		mm	1590		1595	1590			1595		
Min. turning circle (kerb to kerb)		m	10.72								
Luggage space	max. length	mm	1671								
	max. width	mm	1096								
Luggage capacity	VDA	l	430*								
	max. with folded seats (VDA)	l	1598**								
Performance											
Fuel consumption ⁽³⁾	Urban cycle l/100 km / mpg	16", 17", 18" & 19"	6.6 / 42.8	6.5 / 43.5	7.4 / 38.2	4.2 / 67.3	5.1 / 55.4	5.3 / 53.3	5.7 / 49.6		
	Extra-urban l/100 km / mpg	16", 17", 18" & 19"	5.1 / 55.4	5.2 / 54.3	4.8 / 58.9	3.6 / 78.5	4.1 / 68.9	4.4 / 64.2	4.5 / 62.8		
	Combined l/100 km / mpg	16", 17", 18" & 19"	5.6 / 50.4	5.6 / 50.4	5.8 / 48.7	3.8 / 74.3	4.4 / 64.2	4.7 / 60.1	4.9 / 57.6		
CO ₂ mass emission (combined)		g/km	129	129	134	99	116	122	129		
Emission Level			Euro 6b								
Max. Speed		kph / mph	185 / 115	173 / 108	200 / 124	182 / 113	190 / 118	183 / 114	190 / 118		
Acceleration	0 - 62 mph (0 - 100 kph)	sec	10.6	12.9	8.9	11.9	9.9	11.1	10.5		

*Luggage capacity changes to 401L with Bose® audio system
**Luggage capacity with seats folded changes to 1569L Bose® audio system

PRICE LIST

Grade	Engine	Transmission	Basic Price £	VAT £	Total Retail £	On The Road Price £
VISIA	1.2 DIG-T 115	6 manual	15,900.00	3,180.00	19,080	19,295
	1.5 dCi 110	6 manual	17,391.67	3,478.33	20,870	21,045
ACENTA	1.2 DIG-T 115	6 manual	17,887.50	3,577.50	21,465	21,680
	1.2 DIG-T 115	Xtronic	19,095.83	3,819.17	22,915	23,130
	1.5 dCi 110	6 manual	19,379.17	3,875.83	23,255	23,430
N-CONNECTA	1.2 DIG-T 115	6 manual	19,658.33	3,931.67	23,590	23,805
	1.2 DIG-T 115	Xtronic	20,866.67	4,173.33	25,040	25,255
	1.6 DIG-T 163	6 manual	20,808.33	4,161.67	24,970	25,225
	1.5 dCi 110	6 manual	21,150.00	4,230.00	25,380	25,555
	1.6 dCi 130	6 manual	22,158.33	4,431.67	26,590	26,805
	1.6 dCi 130	Xtronic	23,366.67	4,673.33	28,040	28,255
TEKNA	1.6 dCi 130	4WD 6 manual	23,575.00	4,715.00	28,290	28,505
	1.2 DIG-T 115	6 manual	21,512.50	4,302.50	25,815	26,030
	1.2 DIG-T 115	Xtronic	22,720.83	4,544.17	27,265	27,480
	1.6 DIG-T 163	6 manual	22,662.50	4,532.50	27,195	27,450
	1.5 dCi 110	6 manual	23,004.17	4,600.83	27,605	27,780
	1.6 dCi 130	6 manual	24,012.50	4,802.50	28,815	29,030
TEKNA+	1.6 dCi 130	Xtronic	25,220.83	5,044.17	30,265	30,480
	1.6 dCi 130	4WD 6 manual	25,429.17	5,085.83	30,515	30,730
	1.2 DIG-T 115	6 manual	23,012.50	4,602.50	27,615	27,830
	1.2 DIG-T 115	Xtronic	24,220.83	4,844.17	29,065	29,280
	1.6 DIG-T 163	6 manual	24,162.50	4,832.50	28,995	29,250
	1.5 dCi 110	6 manual	24,504.17	4,900.83	29,405	29,580
TEKNA+	1.6 dCi 130	6 manual	25,512.50	5,102.50	30,615	30,830
	1.6 dCi 130	Xtronic	26,720.83	5,344.17	32,065	32,280
	1.6 dCi 130	4WD 6 manual	26,929.17	5,385.83	32,315	32,530

COMPANY CAR DRIVERS ^A				
P11D VALUE £	BIK %	MONTHLY £ BIK AT 20%	MONTHLY £ BIK AT 40%	MONTHLY £ BIK AT 45%
19,080	24%	£76.32	£152.63	£171.71
20,870	21%	£73.03	£146.07	£164.33
21,465	24%	£85.85	£171.70	£193.16
22,915	24%	£91.65	£183.30	£206.21
23,255	21%	£81.38	£162.77	£183.11
23,590	24%	£94.35	£188.70	£212.29
25,040	24%	£100.15	£200.30	£225.34
24,970	25%	£104.03	£208.07	£234.08
25,380	25%	£110.78	£221.57	£249.26
26,590	26%	£121.50	£243.00	£273.38
28,040	27%	£127.30	£254.60	£286.43
28,290	25%	£104.03	£208.07	£234.08
25,815	24%	£103.25	£206.50	£232.31
27,265	24%	£109.05	£218.10	£245.36
27,195	25%	£113.30	£226.60	£254.93
27,605	21%	£96.62	£193.23	£217.39
28,815	25%	£120.05	£240.10	£270.11
30,265	26%	£131.13	£262.27	£295.05
30,515	27%	£137.32	£274.63	£308.96
27,615	24%	£110.45	£220.90	£248.51
29,065	24%	£116.25	£232.50	£261.56
28,995	25%	£120.80	£241.60	£271.80
29,405	21%	£102.92	£205.83	£231.56
30,615	25%	£127.55	£255.10	£286.99
32,065	27%	£145.42	£290.83	£327.19
32,315	26%	£138.93	£277.87	£312.60

Print | Close

OPTIONS

	VISIA	ACENTA	N-CONNECTA	TEKNA	TEKNA+	BASIC £	VAT £	TOTAL £
Metallic Paint	○	○	○	○	○	47917	95.83	575
Premium Metallic Paint	○	○	○	○	○	620.83	124.17	745
Pearlescent Paint	○	○	○	○	○	620.83	124.17	745
18" Alloy wheels		○	●			354.17	70.83	425
18" Alloy wheels (wheel size reduction from standard 19" alloys)			●	○	○	0.00	0.00	0
Visia Smart Vision Pack: Intelligent Rear View Mirror, Intelligent Emergency Braking, Lane Departure Warning, Front and Rear Parking Sensors	○					458.33	91.67	550
Smart Vision Pack: High Beam Assist, Intelligent Rear View Mirror, Intelligent Emergency Braking, Lane Departure Warning, Intelligent Rear View Mirror		○	●	●	●	495.83	9916	595
Tech Pack: NissanConnect EVO 7" Touchscreen Navigation and Entertainment System, Privacy glass, Sharkfin antenna, Rear View Camera [‡]		○	●	●	●	662.50	132.50	795
Comfort Pack: Panoramic Glass Roof with One-touch shade, Matte Silver Roof Rails		○			●	495.83	9916	595
Glass Roof Pack: Panoramic Glass Roof with One-touch electric shade			○	○	●	375.00	75.00	450
Heat Pack: Front Heated Seats and ThermoClear Heated Windscreen		○	○	●	●	245.83	4916	295
LED Pack: LED Headlights, Adaptive Front Lighting System, Signature LED Daytime Running Lights, Automatic Headlight Levelling System			○	●	●	412.50	82.50	495
Executive Pack: Part Leather Trim, Front Heated Seats, Driver Electric Seat Adjustment, ThermoClear Heated Windscreen			○	●		745.83	14917	895
Plum Coloured Nappa Leather Trim (replaces standard Black Nappa Leather on Tekna+)					○	412.50	82.50	495
Space Saver Spare Wheel [‡]	□	□	□			17917	35.83	215
17" Snow Flake alloy wheels* - silver, black or grey	□	□	□	□	□	76916	153.83	922.99
19" Wind alloy wheels* - silver, black or grey	□	□	□	□	□	100732	201.46	1208.78
19" Ibis alloy wheels* - silver, black or grey	□	□	□	□	□	100732	201.46	1208.78
Side styling bars stainless steel with illumination	□	□	□	□	□	628.93	125.79	754.72
Cross over Pack (front and rear styling plate)	□	□	□	□	□	416.67	83.33	500
Cross bars for roof ralling	□	□	□	□	□	192.83	38.57	231.39
Dog guard/boot separator	□	□	□	□	□	186.19	37.24	223.43
Protection Pack: Velour Mats, Soft Trunkliner, Mudguards and Safety Kit	□	□	□	□	□	190.83	38.17	229
Design Pack: Front Lip Finisher and Rear Bumper Finisher (Elegance Pack)	□	□	□	□	□	24917	49.83	299
Welcoming Lights	□	□	□	□	□	210.41	50.33	301.99

*Price quoted is for a set of 4 wheels and does not include Tyres or TPMS

[‡]Spare wheel pack not applicable with Bose®

[‡]N-Connecta & Tekna Tech Pack gains Around View Monitor as standard

Dealer fit option prices include fitting but are only a guide. Please check with your local Nissan dealer for exact prices.

Optional - ○ Standard - ● Optional Dealer Fit - □

DPF FILTER

WHAT IS A DPF?

A **DIESEL PARTICULATE FILTER (DPF)** forms part of the vehicle's exhaust in order to limit the amount of soot particles contained within the exhaust gas passing into the atmosphere.

When the amount of soot in the filter reaches a specific level, this needs to be reduced in order to maintain the filter's function.

This reduction is called **'REGENERATION'** and is carried out by the vehicle's electronic control system which raises the exhaust gas temperatures during normal driving. If a vehicle requires frequent regeneration due to driving style, these high temperatures cause the engine oil to degrade more quickly.

However, from 2011 onwards Nissan vehicles were fitted with an **OIL CHANGE SUPERVISOR (OCS)** as well as a DPF to help monitor the condition of the oil and ensure the quality never falls below a minimum level.

WHAT IF I ONLY DRIVE SHORT JOURNEYS?

If the vehicle is only driven for short journeys, or at low speed, then it may not be possible for regeneration to occur. In this situation, the below warning lights will be illuminated on your dashboard.



Please refer to your Owner's Manual for further information.

After seeing these warning lights you need to drive, as soon as possible, above 40mph until the light goes out. This can take up to 30 minutes depending on the amount of soot collected in the filter.

WHAT IF I IGNORE THEM?

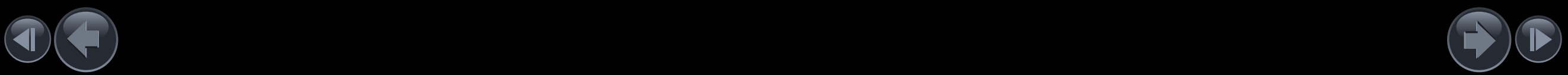
If you continue to drive at low speeds the exhaust gas temperatures cannot rise, so regeneration cannot occur. In this instance, a combination of the below warning lights will be illuminated on you dashboard.



In this case, and in order to protect the engine and DPF Filter, the vehicle will require **'SERVICE REGENERATION'** which can only be carried out by a workshop equipped with Nissan diagnostic equipment. You will need to go to your nearest Nissan dealer in case the oil and filter needs to be replaced.

With a Nissan Service Plan you will benefit from genuine Nissan parts and Nissan Genuine Motor Oil, which have been engineered specifically for Nissan vehicles.

As **'SERVICE REGENERATION'** is not a manufacturing fault, so the cost will **NOT** be covered under warranty.





[Print](#) | [Close](#)

[Exterior design](#) | [Interior design](#) | [Technology & Performance](#) | [Interior space](#) | [Nissan Intelligent Mobility](#) | [Style & Accessories](#) | [Technical Specifications](#) | [Price List](#) | [Commitments](#)

[Qashqai Model and option prices](#) | [CO2 emissions](#) | [Further Information](#)

[Page 1](#) | [Page 2](#) | [Page 3](#) | [Page 4](#) | [Page 5](#)



NISSAN QASHQAI

Grade	Engine	Transmission	Basic Price £	VAT £	Total Retail £	On The Road Price £
VISIA	1.2 DIG-T 115	6 manual	15,900.00	3,180.00	19,080	19,295
	1.5 dCi 110	6 manual	17,391.67	3,478.33	20,870	21,045
ACENTA	1.2 DIG-T 115	6 manual	17,887.50	3,577.50	21,465	21,680
	1.2 DIG-T 115	Xtronic	19,095.83	3,819.17	22,915	23,130
	1.5 dCi 110	6 manual	19,379.17	3,875.83	23,255	23,430
N-CONNECTA	1.2 DIG-T 115	6 manual	19,658.33	3,931.67	23,590	23,805
	1.2 DIG-T 115	Xtronic	20,866.67	4,173.33	25,040	25,255
	1.6 DIG-T 163	6 manual	20,808.33	4,161.67	24,970	25,225
	1.5 dCi 110	6 manual	21,150.00	4,230.00	25,380	25,555
	1.6 dCi 130	6 manual	22,158.33	4,431.67	26,590	26,805
	1.6 dCi 130	Xtronic	23,366.67	4,673.33	28,040	28,255
	1.6 dCi 130	4WD 6 manual	23,575.00	4,715.00	28,290	28,505
TEKNA	1.2 DIG-T 115	6 manual	21,512.50	4,302.50	25,815	26,030
	1.2 DIG-T 115	Xtronic	22,720.83	4,544.17	27,265	27,480
	1.6 DIG-T 163	6 manual	22,662.50	4,532.50	27,195	27,450
	1.5 dCi 110	6 manual	23,004.17	4,600.83	27,605	27,780
	1.6 dCi 130	6 manual	24,012.50	4,802.50	28,815	29,030
	1.6 dCi 130	Xtronic	25,220.83	5,044.17	30,265	30,480
	1.6 dCi 130	4WD 6 manual	25,429.17	5,085.83	30,515	30,730

Print | Close

Exterior design | Interior design | Technology & Performance | Interior space | Nissan Intelligent Mobility | Style & Accessories | Technical Specifications | [Price List](#) | Commitments

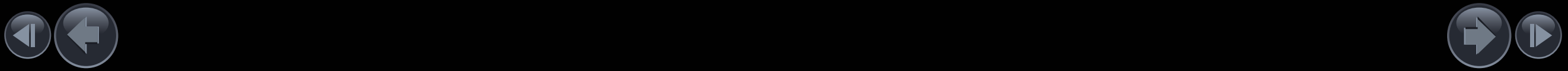
[Qashqai Model and option prices](#) | [CO2 emissions](#) | [Further Information](#)

Page 1 | [Page 2](#) | Page 3 | Page 4 | Page 5



Grade	Engine	Transmission	Basic Price £	VAT £	Total Retail £	On The Road Price £
TEKNA+	1.2 DIG-T 115	6 manual	23,012.50	4,602.50	27,615	27,830
	1.2 DIG-T 115	Xtronic	24,220.83	4,844.17	29,065	29,280
	1.6 DIG-T 163	6 manual	24,162.50	4,832.50	28,995	29,250
	1.5 dCi 110	6 manual	24,504.17	4,900.83	29,405	29,580
	1.6 dCi 130	6 manual	25,512.50	5,102.50	30,615	30,830
	1.6 dCi 130	Xtronic	26,720.83	5,344.17	32,065	32,280
	1.6 dCi 130	4WD 6 manual	26,929.17	5,385.83	32,315	32,530

[Print](#) | [Close](#)



NISSAN QASHQAI OPTIONS

	VISIA	ACENTA	N-CONNECTA	TEKNA	TEKNA+	BASIC £	VAT £	TOTAL £
Metallic Paint	○	○	○	○	○	479.17	95.83	575
Premium Metallic Paint	○	○	○	○	○	620.83	124.17	745
Pearlescent Paint	○	○	○	○	○	620.83	124.17	745
18" Alloy wheels		○	●			354.17	70.83	425
18" Alloy wheels (wheel size reduction from standard 19" alloys)			●	○	○	0.00	0.00	0
Visia Smart Vision Pack: Intelligent Rear View Mirror, Intelligent Emergency Braking, Lane Departure Warning, Front and Rear Parking Sensors	○					458.33	91.67	550
Smart Vision Pack: High Beam Assist, Intelligent Rear View Mirror, Intelligent Emergency Braking, Lane Departure Warning, Intelligent Rear View Mirror		○	●	●	●	495.83	99.16	595
Tech Pack: NissanConnect EVO 7" Touchscreen Navigation and Entertainment System, Privacy glass, Sharkfin antenna, Rear View Camera**		○	●	●	●	662.50	132.50	795
Comfort Pack: Panoramic Glass Roof with One-touch shade, Matte Silver Roof Rails		○			●	495.83	99.16	595
Glass Roof Pack: Panoramic Glass Roof with One-touch electric shade			○	○	●	375.00	75.00	450
Heat Pack: Front Heated Seats and ThermaClear Heated Windscreen		○	○	●	●	245.83	49.16	295

Optional - ○ Standard - ● Optional Dealer Fit - □

Print | Close

Exterior design | Interior design | Technology & Performance | Interior space | Nissan Intelligent Mobility | Style & Accessories | Technical Specifications | [Price List](#) | Commitments

[Qashqai Model and option prices](#) | [CO2 emissions](#) | [Further Information](#)

Page 1 | Page 2 | Page 3 | [Page 4](#) | Page 5

NISSAN QASHQAI OPTIONS

	VISIA	ACENTA	N-CONNECTA	TEKNA	TEKNA+	BASIC £	VAT £	TOTAL £
LED Pack: LED Headlights, Adaptive Front Lighting System, Signature LED Daytime Running Lights, Automatic Headlight Levelling System			○	●	●	412.50	82.50	495
Executive Pack: Part Leather Trim, Front Heated Seats, Driver Electric Seat Adjustment, Thermaclear Heated Windscreen			○	●		745.83	149.17	895
Plum Coloured Nappa Leather Trim (replaces standard Black Nappa Leather on Tekna+)					○	412.50	82.50	495
Space Saver Spare Wheel [#]	□	□	□			179.17	35.83	215
17" Snow Flake alloy wheels* - silver, black or grey	□	□	□	□	□	769.16	153.83	922.99
19" Wind alloy wheels* - silver, black or grey	□	□	□	□	□	1007.32	201.46	1208.78
19" Ibiscus alloy wheels* - silver, black or grey	□	□	□	□	□	1007.32	201.46	1208.78
Side styling bars stainless steel with illumination	□	□	□	□	□	628.93	125.79	754.72
Cross over Pack (front and rear styling plate)	□	□	□	□	□	416.67	83.33	500
Cross bars for roof railing	□	□	□	□	□	192.83	38.57	231.39
Dog guard/boot separator	□	□	□	□	□	186.19	37.24	223.43
Protection Pack: Velour Mats, Soft Trunkliner, Mudguards and Safety Kit	□	□	□	□	□	190.83	38.17	229
Design Pack: Front Lip Finisher and Rear Bumper Finisher (Elegance Pack)	□	□	□	□	□	249.17	49.83	299
Welcoming Lights	□	□	□	□	□	210.41	50.33	301.99

*Price quoted is for a set of 4 wheels and does not include Tyres or TPMS

Optional - ○ Standard - ● Optional Dealer Fit - □

[#]Spare wheel pack not applicable with Bose®

^{##}N-Connecta & Tekna Tech Pack gains Around View Monitor as standard

Dealer fit option prices include fitting but are only a guide. Please check with your local Nissan dealer for exact prices.

Print | Close

Exterior design | Interior design | Technology & Performance | Interior space | Nissan Intelligent Mobility | Style & Accessories | Technical Specifications | [Price List](#) | Commitments

[Qashqai Model and option prices](#) | [CO2 emissions](#) | [Further Information](#)

Page 1 | Page 2 | Page 3 | Page 4 | Page 5

CO2 MASS EMISSIONS AND VEHICLE EXCISE DUTY

Vehicle	Engine	Transmission	Body Style	Emission Level	CO ₂ Mass Emissions g/km		12 months VED* £	
					≤18" Alloys	19" Alloys	≤18" Alloys	19" Alloys
QASHQAI	DIG-T 115	6 manual/ Xtronic	5 door	EURO6	129	133	160	200
	dCi 110	6 manual	5 door	EURO6	99	103	120	140
	dCi 130	6 manual	5 door	EURO6	116	120	160	
		6 manual 4x4	5 door	EURO6	129	133	160	200
		Xtronic transmission	5 door	EURO6	122	128	160	
	DIG-T 163	6 manual	5 door	EURO6	134	138	200	

* Determined by CO₂ emissions figure and fuel type - see "Further information". NB. Navara VED is fixed at £230 as it is considered a commercial vehicle.

** Juke, Pulsar, Qashqai and All New X-Trail figures are subject to final homologation.

Print | Close

Exterior design | Interior design | Technology & Performance | Interior space | Nissan Intelligent Mobility | Style & Accessories | Technical Specifications | [Price List](#) | Commitments

Qashqai Model and option prices | [CO2 emissions](#) | Further Information

NISSAN CARE WARRANTY

- Provides protection for up to 3 additional years **on top of standard manufacturer's warranty**.
- Available for vehicles under 3 years old/60,000 miles from point of purchase.

Model	Retail exc. VAT £	Retail inc. VAT £
MICRA	198	237
NOTE	206	247
PULSAR	231	277
JUKE	214	257
QASHQAI / JUKE NISMO	239	287
X-TRAIL	373	447
370Z	514	617
370Z NISMO	631	757
GT-R	3,464	4,157

Prices above are for an additional 1 Year Nissan Care Warranty on top of the standard new car warranty. The warranty expires either 4 years or 60,000 miles from the date of vehicle registration, whichever comes first. Further age/mileage options are available.

- Provides protection on top of the New Vehicle Warranty (5yr/100k mile) for the following models.

Duration	Navara		NV200 Combi	
	Retail exc. VAT £	Retail inc. VAT £	Retail exc. VAT £	Retail inc. VAT £
5 Years up to 125,000 Miles (+25,000 miles)	808.33	970	683.33	820
5 Years up to 150,000 Miles (+50,000 miles)	1,016.67	1,220	858.33	1,030
6 Years up to 125,000 Miles (+1 Year / 25,000 miles)	916.67	1,100	766.67	920
6 Years up to 150,000 Miles (+ 1 Year / 50,000 miles)	1,150	1,380	966.67	1,160

[Print](#) | [Close](#)

[Exterior design](#) | [Interior design](#) | [Technology & Performance](#) | [Interior space](#) | [Nissan Intelligent Mobility](#) | [Style & Accessories](#) | [Technical Specifications](#) | [Price List](#) | [Commitments](#)

[Qashqai Model and option prices](#) | [CO2 emissions](#) | [Further Information](#)

[Page 1](#) | [Page 2](#) | [Page 3](#) | [Page 4](#)

NISSAN INSURANCE

Nissan Insurance has been designed to help Nissan drivers get the most from their cover, boasting the following benefits:

- Use of Nissan Approved Repairers and franchised trained technicians
- Use of only Nissan genuine parts for repairs
- Guaranteed repair for 3 years
- New car replacement, if your vehicle is written off when under 12 months old
- Cover provided for driving in the EU, subject to a maximum 30 days per year
- Personal accident benefit up to £5,000
- Up to £100 personal belongings cover
- £300 towards replacement locks if your keys are lost or stolen

Call Nissan Insurance today on 0344 335 3780

Calls charged at the same rate as local 01 and 02 numbers and will be included in inclusive call packages from mobiles. Lines are open Monday to Friday 9am-7pm and Saturday 9am-5pm.

Terms and Conditions

Quotations are subject to underwriting terms and acceptance criteria.

Nissan Insurance is arranged by Europa Group Ltd trading as Nissan Insurance Services on behalf of Maiden Global Holdings Ltd (registered in England with company number 07324422) Registered office: Albion House, Valley Business Centre, Gordon Road, High Wycombe, HP13 6EQ. Authorised and regulated by the Financial Conduct Authority. Financial Services Register number 555397. Europa Group Limited is authorised and regulated by the Financial Conduct Authority. Financial Services Register No. 309794. Registered as a limited company in England and Wales No. 3279177. Registered office: Europa House, Midland Way, Thornbury, Bristol BS35 2JX.

[Print](#) | [Close](#)

[Exterior design](#) | [Interior design](#) | [Technology & Performance](#) | [Interior space](#) | [Nissan Intelligent Mobility](#) | [Style & Accessories](#) | [Technical Specifications](#) | [Price List](#) | [Commitments](#)

[Qashqai Model and option prices](#) | [CO2 emissions](#) | [Further Information](#)

[Page 1](#) | [Page 2](#) | [Page 3](#) | [Page 4](#)



FURTHER INFORMATION

On The Road Prices. On The Road Price includes 12 months Government Vehicle Excise Duty (VED) determined by CO₂ emissions figure and fuel type, £55 Government First Registration Fee, number plates and delivery to the Nissan Dealership.

VED rates are determined by the vehicles CO₂ emissions figures and by the type of fuel used.
The following table applies to all new car registrations:

VED Band	A	B	C	D	E	F	G	H	I	J	K	L	M
CO ₂ Emissions Figure (g/km)*	up to 100g	101-110g	111-120g	121-130g	131-140g	141-150g	151-165g	166-175g	176-185g	186-200g	201-225g	226-255g	over 255g
Petrol Car	£0	£0	£0	£0	£130	£145	£185	£300	£355	£500	£650	£885	£1,120
Diesel Car	£0	£0	£0	£0	£130	£145	£185	£300	£355	£500	£650	£885	£1,120
Alternative Fuel Car	£0	£0	£0	£0	£120	£135	£175	£290	£345	£490	£640	£875	£1,110

* g/km = grammes of CO₂ per kilometre travelled.

All Light Commercial Vehicles will have a standard VED rate of £230 per annum.

VAT and VED

VAT application is based on current HMRC guidelines, please check with HMRC for specific guidance for the vehicle you are purchasing.
VED is determined by the DVLA, please check with the DVLA for specific guidance for the vehicle you are purchasing.

Optional equipment. This price list features a selection from the full range of optional equipment, be they standard, dealer fit or factory options.

For further information and details of the full range, please contact your local Authorised Nissan Dealer.

Nissan's commitment to you includes all of the following benefits – some of which may be the reasons why you chose your new Nissan in the first place:

Manufacturer's warranty – Nissan's comprehensive warranty provides cover for your new Nissan from defects in materials or workmanship. Your vehicle is covered in all European Countries where Authorised Nissan Dealers are located. If your vehicle becomes inoperative due to a warrantable defect a towing service, when necessary, to the Authorised Nissan Dealer is covered. If a warrantable defect abroad takes more than six hours to repair, the Touring Assistance Programme will pay for a hotel room or rental car up to a certain maximum. The paint warranty covers painted body parts (excluding the underbody) for three years regardless of mileage driven. For further details please contact your local Authorised Nissan Dealer. Petrol and diesel engine cars - Three-year/60,000 miles. Petrol and diesel engine LCVs and Navara - Five-year/100,000 miles.

LEAF and e-NV200 – Nissan LEAF and e-NV200 offer a 5-year / 60,000 mile warranty on all EV dedicated components, including the lithium-ion battery, and a 3-year / 60,000 mile warranty on standard components. This is with the expression of e-NV200 which offers a 5-year / 60,000 mile warranty on mechanical components and corrosion*. The Nissan LEAF and e-NV200 lithium-ion battery state of health guarantee protects against battery capacity loss (less than 9 bars out of 12) as shown on LEAF and e-NV200's capacity gauge for a period of 5 years / 60,000 miles. For LEAF and e-NV200 flex customers, the battery state of health guarantee applies for the duration of the battery lease.

*The Basic Vehicle Warranty for e-NV200, according to 3.1 of the Warranty Booklet and Maintenance Record, is extended to 5 years (from the warranty start date) / 60,000 miles (whichever comes first). Only vehicles registered on or after 1st November 2016 are eligible for the Extended Warranty. Body parts and paint excluded during year four and year five. Terms and exclusions apply, for further information please see Extended Warranty Terms and Conditions. Apart from the afore-mentioned, all warranty conditions included in the Warranty Booklet and Maintenance Record remain unchanged. Issuer of this Extended Warranty is Nissan International Insurance Ltd

Print | Close

Exterior design | Interior design | Technology & Performance | Interior space | Nissan Intelligent Mobility | Style & Accessories | Technical Specifications | [Price List](#) | Commitments

Qashqai Model and option prices | CO₂ emissions | [Further Information](#)

Page 1 | Page 2 | [Page 3](#) | Page 4



FURTHER INFORMATION

Nissan European Roadside Assistance is provided for the period of your new vehicle manufacturer warranty.

Roadside, Recovery and At Home products are provided by RAC Motoring Services (Registered No. 1424399, Registered Office: 8 Surrey Street, Norwich, NR1 3NG). RAC Motoring Services (in respect of insurance mediation activities only) is authorised and regulated by the Financial Conduct Authority and within the jurisdiction of the Financial Ombudsman Service and Financial Services Compensation Scheme.

Onward Travel and European Cover are underwritten by RAC Insurance Limited (Registered No. 1424399, Registered Office: 8 Surrey Street, Norwich, NR1 3NG). RAC Insurance Limited is authorised and regulated by the Financial Conduct Authority and within the jurisdiction of the Financial Ombudsman Service and Financial Services Compensation Scheme.

Nissan EV Pan-European Roadside Assistance is provided by AXA for 3 years or 60,000 miles, whichever comes first.

For LEAF and e-NV200Flex (battery lease) customers, the Nissan EV Pan-European Roadside Assistance will cover you for the duration of your battery lease agreement should your Nissan EV run out of battery charge. For any other repair work, the basic warranty clause still applies.

Benefits and Services are provided by AXA Assistance. AXA Assistance is authorised and regulated by the Financial Conduct Authority (FCA).

FCA Register number 439069. AXA Assistance UK Limited (registration 2638890) 106 - 118 Station Road, Redhill Surrey RH1 1PR

Peace of mind – we always guarantee our workmanship, and all genuine Nissan replacement parts and accessories have a minimum of one year's warranty. Accessory prices are subject to change, please see your nearest dealership for the most up to date prices

Our technicians have been trained by Nissan to work on your vehicle and they are the Nissan specialists. They use the latest equipment to ensure your vehicle is given the best treatment. Accessory prices are subject to change, please see your nearest dealership for the most up to date prices.

Recyclability – we take all our environmental responsibilities very seriously – innovation today comes with a deep respect for the environment. Our engines are now much more unobtrusive and their emissions have been considerably reduced. All our vehicles are designed with recycling in mind.

Nissan Finance offers a wide range of flexible finance schemes to meet the needs of both our retail and business customers. Preferences, Hire Purchase, Nissan Contract Hire and Finance Lease, all offer the in-built flexibility to make the package tailor-made to meet your individual needs. We also provide added security to your finance agreement with a comprehensive range of payment protection plans. Ask your local Authorised Nissan Dealer for details.

The Nissan Motability Programme developed in association with the registered charity Motability enables those with difficulty getting around to obtain selected models on preferential terms.

All prices in this list are quoted in pounds sterling. Value Added Tax (VAT) has been calculated at 20%.

While all reasonable effort has been made to ensure the accuracy of the information provided, due to Nissan's policy of continuous product improvement, all particulars contained are subject to constant revision and Nissan reserves the right to change, alter or modify, among other things, specifications, colours and prices of models without notice at any time. Accordingly you should consult your local Authorised Nissan Dealer for the exact introduction dates of all models and for the most up-to-date information.

Images shown are for guidance purposes. In some instances photos are of non UK specification vehicles and do not represent a specific model, grade or offer.

Print | Close

Exterior design | Interior design | Technology & Performance | Interior space | Nissan Intelligent Mobility | Style & Accessories | Technical Specifications | [Price List](#) | Commitments

Qashqai Model and option prices | CO2 emissions | [Further Information](#)

Page 1 | Page 2 | Page 3 | Page 4



OUR PROMISE. YOUR EXPERIENCE.



43

Print | Close



There's no time limit on how long you will benefit from our promises. If you are a Nissan Customer, we will look after you. **That is our Promise.**



FREE COURTESY CAR

YOU want to stay on the road when your Nissan is in for a service or repair.



FREE VIDEO HEALTH CHECK

YOU want to understand what is going on with your car's service.



SERVICE PRICE MATCH

YOU want the best value for money when it comes to service and repair.



CONTINUOUS ROADSIDE ASSISTANCE

YOU want the peace of mind you get from our quality service to go even further.



HERE FOR YOU

YOU want your problems resolved quickly.



TEST DRIVE YOUR CHOICE

YOU want to test drive the latest Nissan model, engine and gearbox you're interested in buying.

NISSAN PROMISE to keep you mobile free of charge whether you need a courtesy car, or just a lift

NISSAN PROMISE a free vehicle health check and we can even show you any work that might need doing with your own vehicle assessment video.

NISSAN PROMISE simple Fixed Price Servicing, and will price match like-for-like competitor written quotes within 10 miles of your local dealer.

NISSAN PROMISE to provide you with Roadside Assistance for free every time you service your car with us.

NISSAN PROMISE to propose a resolution to any problem within two working days.

NISSAN PROMISE that's what you'll get when you pre-book your test drive either online or through our customer service centre.

Just call 0330 123 1231.

Please visit nissan.co.uk/promise. Terms and conditions apply.

YOU+NISSAN
OUR PROMISE. YOUR EXPERIENCE.

Print | Close

[Exterior design](#) | [Interior design](#) | [Technology & Performance](#) | [Interior space](#) | [Nissan Intelligent Mobility](#) | [Style & Accessories](#) | [Technical Specifications](#) | [Price List](#) | [Commitments](#)

Page 1 | [Page 2](#)



NISSAN MOTOR (GB) LIMITED

The Rivers Office Park
Denham Way
Maple Cross
Rickmansworth
Hertfordshire
WD3 9YS

Visit our website at: www.nissan.co.uk

Part Number: 99999 54268

Prices effective from 1st June 2017 unless otherwise stated

Dealer stamp: